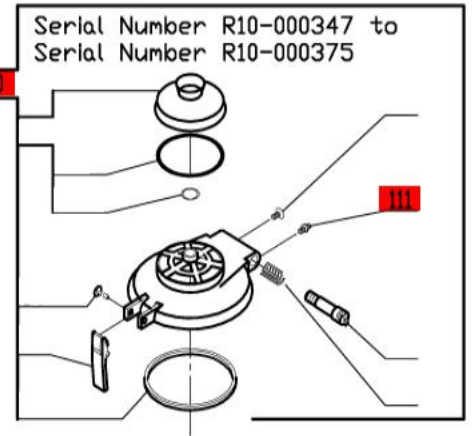
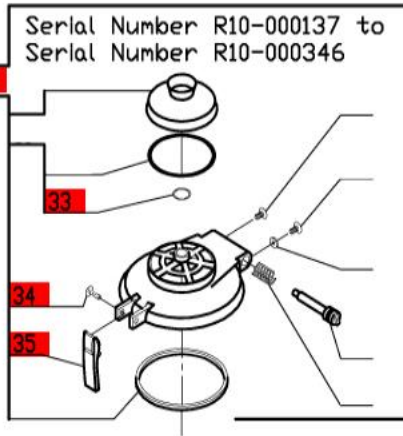
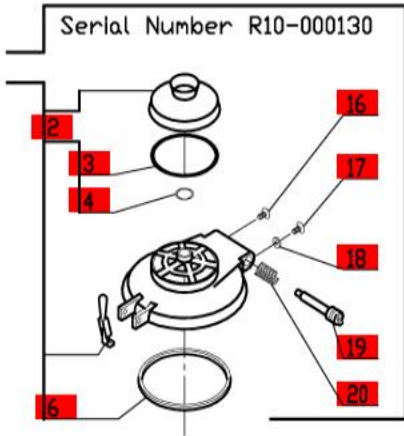


**R10 (ETL)**

2-Speed, 208-240 Volt, 3 Phase, 60Hz.,  
 Low Speed- 1725 RPM, 9 Amp, 3 HP.  
 High Speed- 3450 RPM, 12.5 Amp, 4.5 HP.

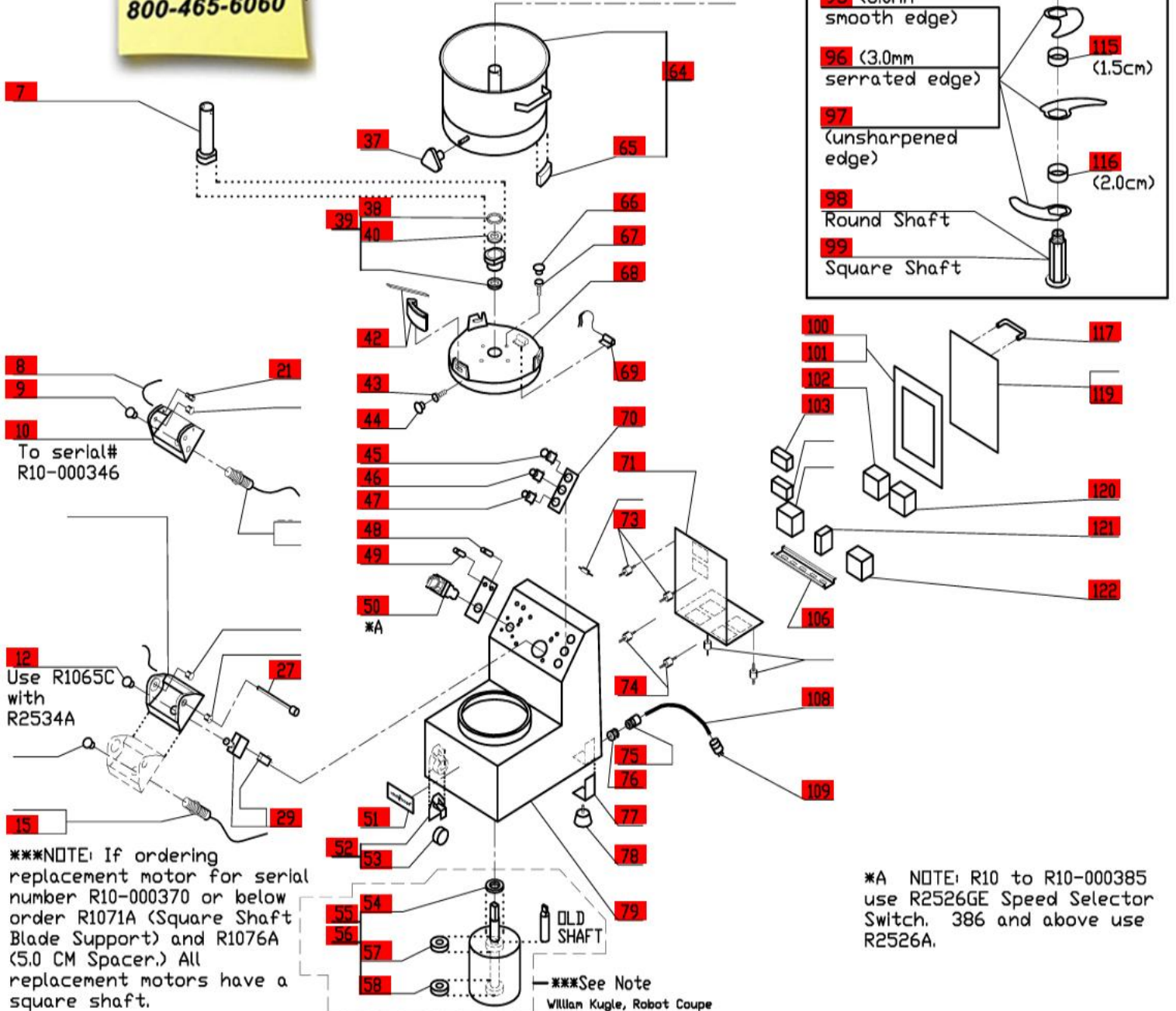
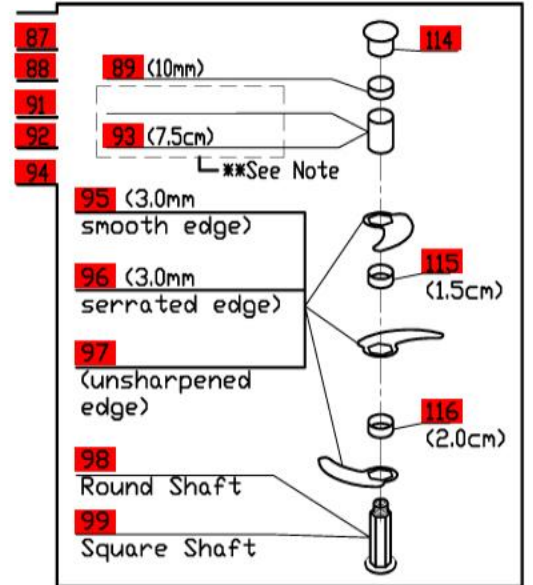
Machines with serial numbers R10-000385 and below.

NOTE: If ordering replacement motor for serial number R10-000370 or below, order R1071A (Square Shaft Blade Support) and R1076A (5.0 CM Spacer.)



**Click on Red Dot  
 OR  
 Call us  
 800-465-6060**

\*\*\*NOTE: When using part number R1071 (round shaft blade support), use part number R1076 (7.5cm spacer). When using part number R1071A (square shaft blade support), Use Part number R1076A (5.0cm spacer).



To serial# R10-000346

Use R1065C with R2534A

\*\*\*NOTE: If ordering replacement motor for serial number R10-000370 or below order R1071A (Square Shaft Blade Support) and R1076A (5.0 CM Spacer.) All replacement motors have a square shaft.

\*A NOTE: R10 to R10-000385 use R2526GE Speed Selector Switch. 386 and above use R2526A.

\*\*\*See Note  
 William Kugle, Robot Coupe