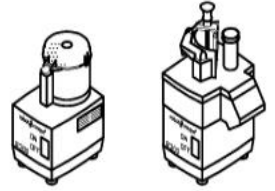


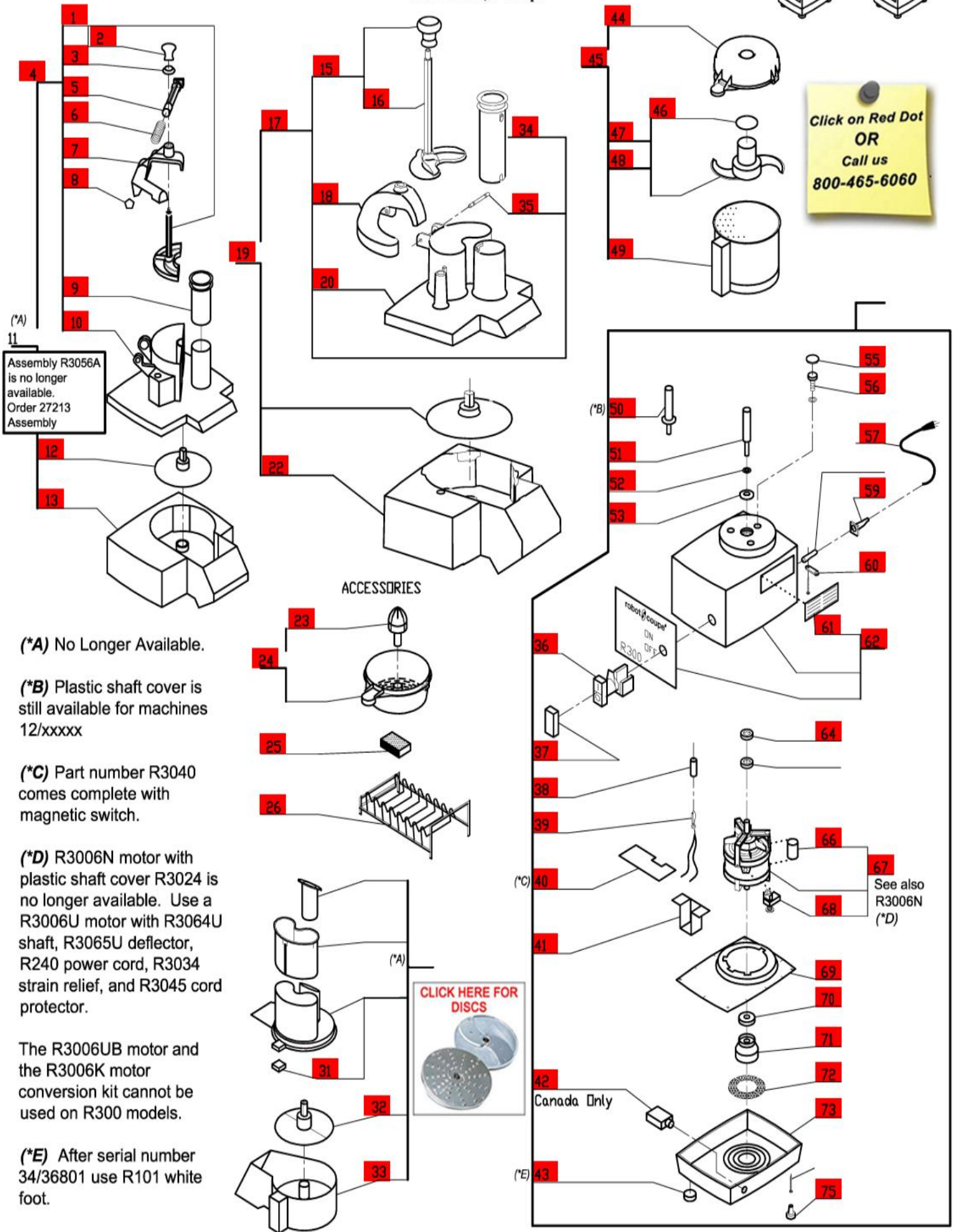
To Serial Number FP002243. Also Ser. Numbers 34/xxxxx

1-Speed, 120 Volt, 1 Phase, 60Hz., 1/2 HP.

1725 RPM, 9 Amps



Click on Red Dot
OR
Call us
800-465-6060



(*A)
11
Assembly R3056A
is no longer
available.
Order 27213
Assembly

(*A) No Longer Available.

(*B) Plastic shaft cover is
still available for machines
12/xxxxx

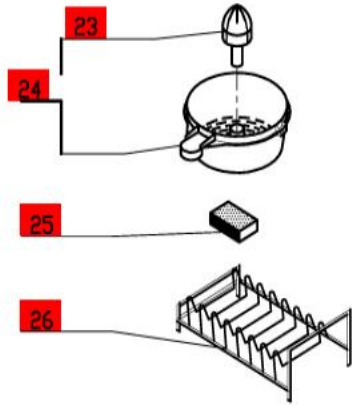
(*C) Part number R3040
comes complete with
magnetic switch.

(*D) R3006N motor with
plastic shaft cover R3024 is
no longer available. Use a
R3006U motor with R3064U
shaft, R3065U deflector,
R240 power cord, R3034
strain relief, and R3045 cord
protector.

The R3006UB motor and
the R3006K motor
conversion kit cannot be
used on R300 models.

(*E) After serial number
34/36801 use R101 white
foot.

ACCESSORIES



See also
R3006N
(*D)

Canada Only