

Serial Number Series-R2xxxxx Also,-230xxxxx03

1-Speed, 120 Volt, 1 Phase, 60Hz., 1/2 HP.

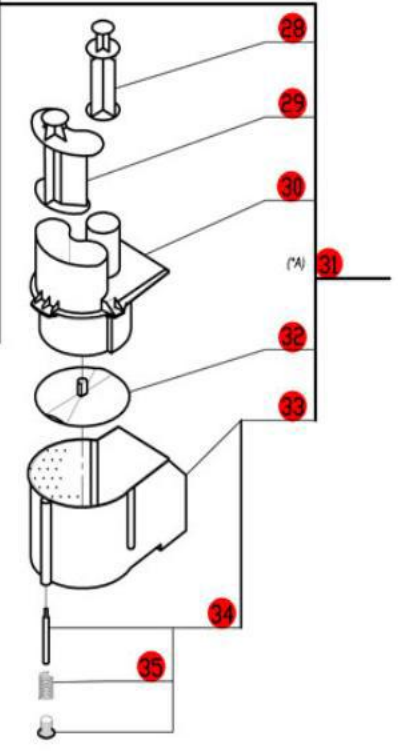
1725 RPM, 7 Amps



(*A)
USA
Serial Numbers
Beginning 230xxxxx03

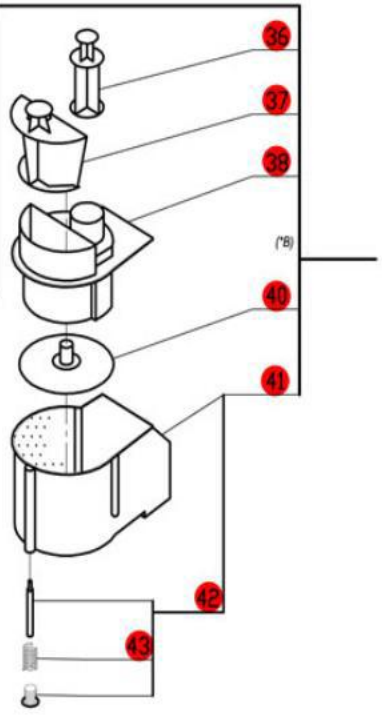
Canada
Serial Numbers Beginning
R2010499

Any complete Feed Lead Set
can be replaced with 27242

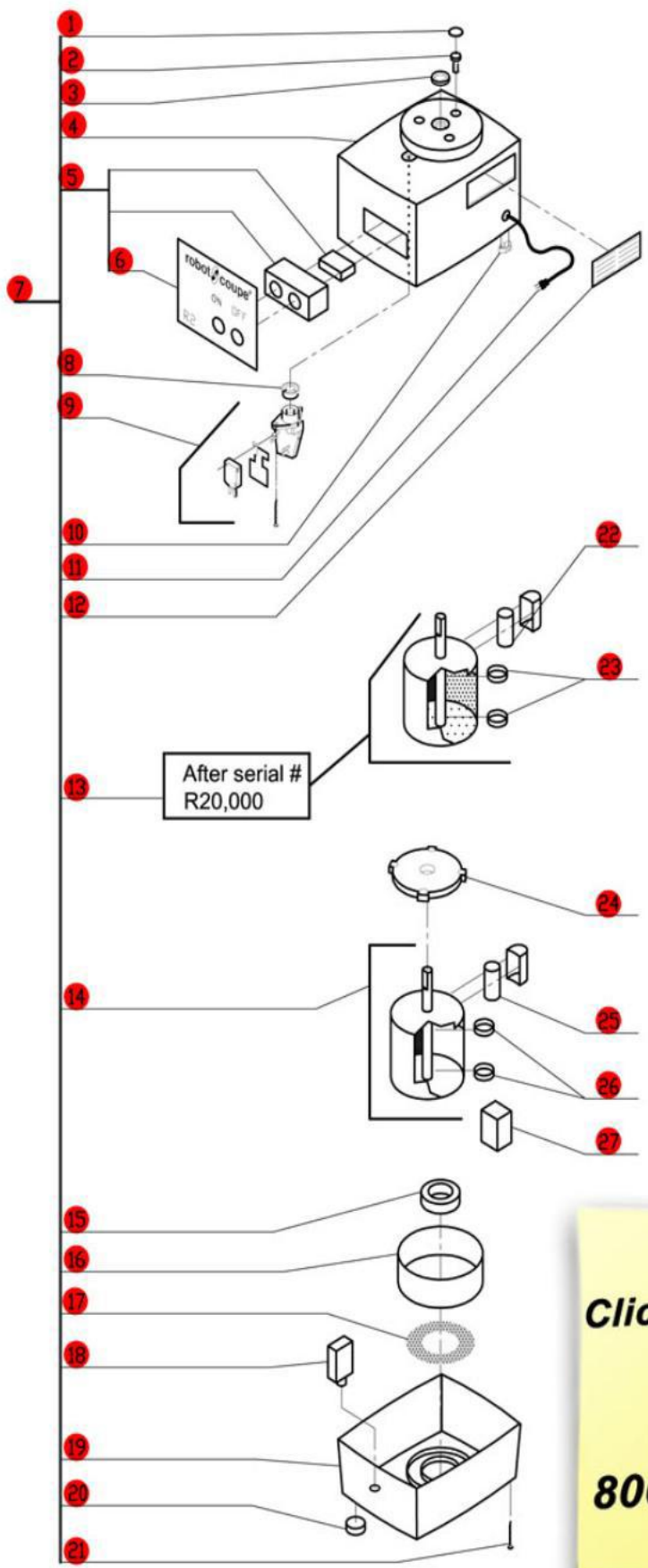


R245N
(USA)
Serial Numbers
R2xxxxx

(Canada)
to Serial #
R2010499



(*B)
R245N is
no longer
available.
Use
27242.



After serial #
R20,000

**Click on Red Dot
OR
Call us
800-465-6060**

ACCESSORIES

